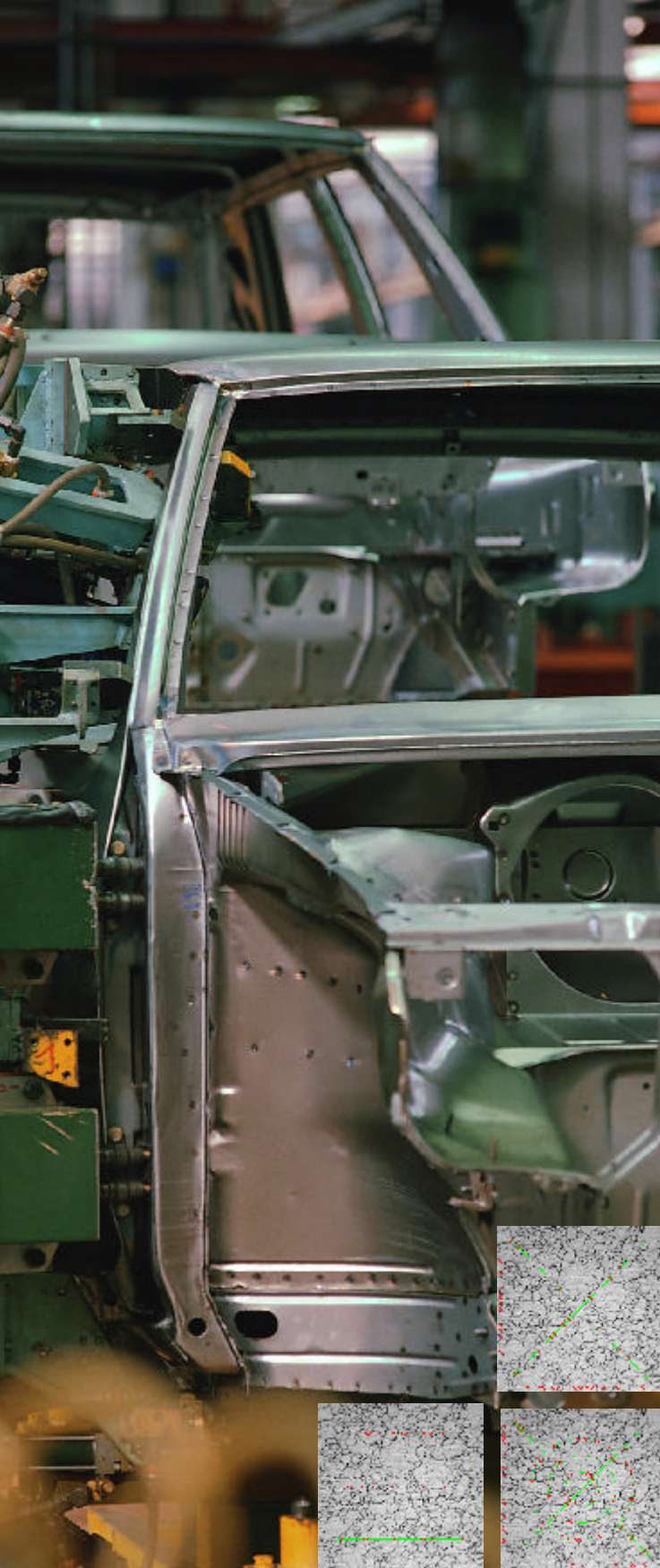


analySIS® Steel Solver

**Image-analytical determination
of grain size via the intercept method**



analySIS® Steel Solver analyzes and documents grain size in compliance with standards such as DIN 50601, ASTM E 112, JIS G 0551, JIS G 0552, EN ISO 643 or with company norms. The software will also insert results into pre-defined reports which correspond to specific norms – fully automatically. In addition to grain-size analysis, the **analySIS® Steel Solver** package offers intelligent image acquisition, phase analysis, interactive object measurement and well-structured data storage.

analySIS® Steel Solver is part of Soft Imaging System's series of materials-science software packages.

Digital Solutions for Imaging and Microscopy
Soft Imaging System



analySIS®

Steel Solver

Qualitative grain-size analysis using the intercept method...



Dealing with complex and difficult tasks requires expertise, years of experience, well thought out strategies and the right tools. This is why the digital metallography solutions developed at Soft Imaging System are developed jointly with reputable firms and experienced users. This enables us to combine proven methods, broad-based know-how and widely-used workflows in our software applications.

The **analySIS® Steel Solver** package contains the full functionality for standards-compliant grain-size determination according to the intercept method, a method in widespread use. Furthermore, phase analysis and interactive measurement methods are integrated. Using pre-defined report templates, automatic, standards-compliant reports can be generated based on evaluation data, images, diagrams, etc.

■ Well-conceived acquisition concepts

Working with **analySIS® Steel Solver** means being able to integrate microscopes, motor stages and various cameras.

Automated microscopes and motor stages can be controlled.

All device settings are documented – fully automatically. The analytical processes are fully automatic as well. This package also provides IntX (Intelligent eXposure) – integrated and automatic exposure control. This makes acquiring top-quality images at the mere click of a button easy for all users.

analySIS® Steel Solver supports all standard image formats. As a special feature, it offers predefined image-import filters. These import filters ensure – along with the correct calibration – that the acquisition parameters of the microscopes of all leading manufacturers are read out and appear in the image information – automatically.

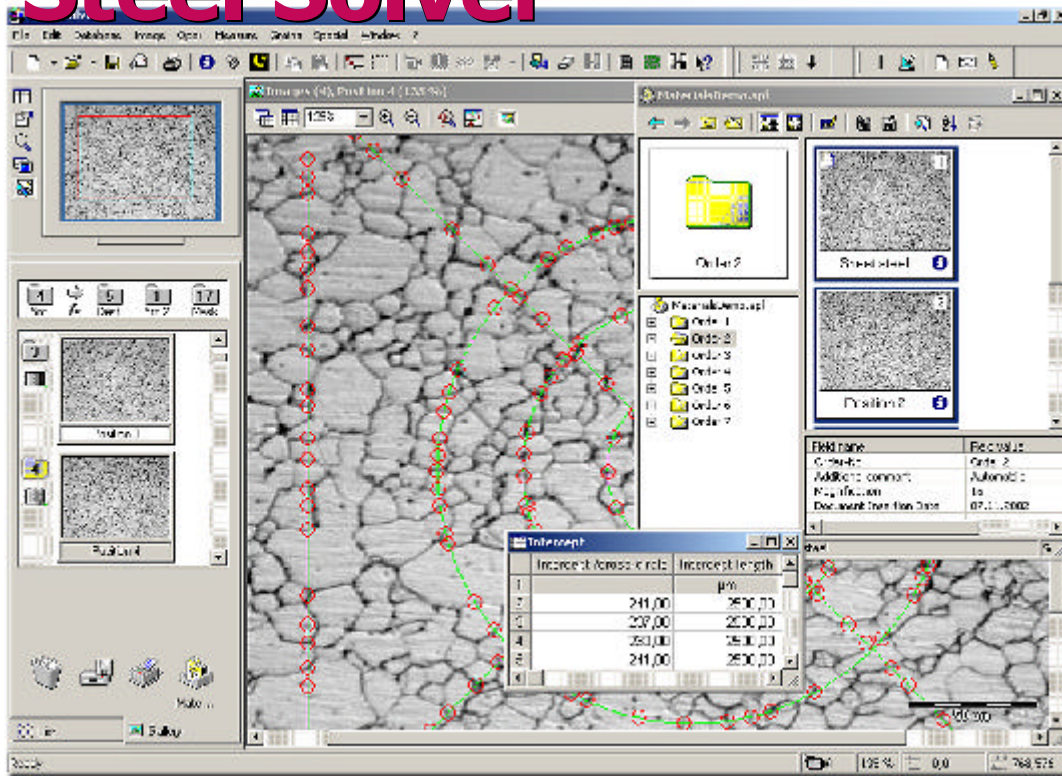
■ Versatile and innovative

For labeling and marking the (live) images, **analySIS® Steel Solver** offers an extensive library of functions for editing and inserting text and graphics. In addition, widely varied functions for filtering, interactive measurement and evaluation of images are integrated. All measurement data is automatically transferred into sheets and can be displayed directly as diagrams or histograms.

■ Standards compliant: grain-size analysis

analySIS® Steel Solver supports the widely used intercept method. Horizontal, vertical, diagonal and circular and combined line configurations are supported. Grain-size is determined according to accepted national and international norms. The basis for determining grain size is the mean intercept length. This method supports analyses of samples with the following types of grain appearance: light grain boundaries; dark grain boundaries; and samples with etched grain-surfaces. Results appear in a sheet.

analySIS® Steel Solver



Key features

- automatic grain-size analysis via intercept method
- measurement lines: horizontal, vertical, diagonal, circular and combinations thereof
- grain boundaries: bright or dark for single-phase etched grain-surface samples
- results: g values and statistics
- supported norms: ASTM E 112; DIN 50601; JIS G 0551; JIS G 0552; EN ISO 643
- extend range of norms to include other national, international or company as well as industrial norms
- chart comparison: onscreen chart comparison with live image, user defined extension of charts
- various camera types can be integrated (digital, analog)
- well-structured data storage (archiving)
- automatic, standards-compliant report generation
- IntX (Intelligent eXposure) - automatic exposure control
- operation of external devices such as motor stages, microscopes, etc.
- image calibration
- image labeling / image filterings / phase analysis
- interactive measurement methods

Europe

Soft Imaging System GmbH
Johann-Krane-Weg 39
48149 Münster
Germany
Phone: +49 (251) 79800-0
Fax: +49 (251) 79800-99

North America

Soft Imaging System Corp.
12596 W. Bayaud Ave. - Suite 300
Lakewood, CO 80228, USA
Phone: +1 (303) 2349-270
and (888) FIND SIS
Fax: +1 (303) 2349-271

Asia / Pacific

Soft Imaging System Sdn Bhd
Jalan Usahawan
S10E, 2nd Floor,
2320 Century Square
63000 Cyberjaya, Malaysia
Phone: +60 (3) 8318-1400
Fax: +60 (3) 8318-1411

Online

e-mail:
info@soft-imaging.de
Website
www.soft-imaging.net



Digital Solutions for Imaging and Microscopy

Soft Imaging System

